

MOVE IN READY



1090 NW 1st St. \$514,000

3 Bed, 3 Bath, 2694 sf, 2-car garage, Den & bonus rooms

Striking new master-on-main craftsman home, roomy floor plan with amenities plus storage galore. Slab granite counters in kitchen with full back splashes and island. Covered front porch and back patio. Carpet and laminate wood flooring throughout with fine trims. Tray ceiling in master, open vault to upper level at foyer. Master has a large walk-in closet. Stainless steel finish appliances, gas fireplace, den and bonus rooms for office/flex space. Front yard irrigation system with landscaping.

Features include: Bonus room, EPS energy efficiency scoring, Epoxy-coated garage floor, Sprinkler system, Glass shower enclosure, Soaker tub, Gas fireplace, Whole-house exhaust system, 95+% AFUE High efficiency gas furnace, landscaping.

3 Bed 3 Bath, 2694 sf, 2-car Gar. Lot 1 / Prop Type: Detached / ML# 16042820 / Dundee Elem / Chehalem Valley Mid / Newberg HS / BI-MICO / DW / DISP / GAS-RNG / SSAPPL / FOR-95+ GAS / GAS-FPLC / LAM-FL / VINYL-FL / WW-CARP / COVERED-PATIO. 1090 NW 1st St. Dundee, OR 97115 ML#16042820



For project updates, photos & more:

Scan this code

Visit [NewHomeRealty.com](https://www.newhomerealty.com) for a selection of new home listings

Call 503.793.4336

Airika @ [NewHomeRealty.com](https://www.newhomerealty.com)



NEW HOME REALTY

Exclusively marketed by New Home Realty
Airika Waible, Principal Broker
Licensed in Oregon

www.newhomerealty.com  

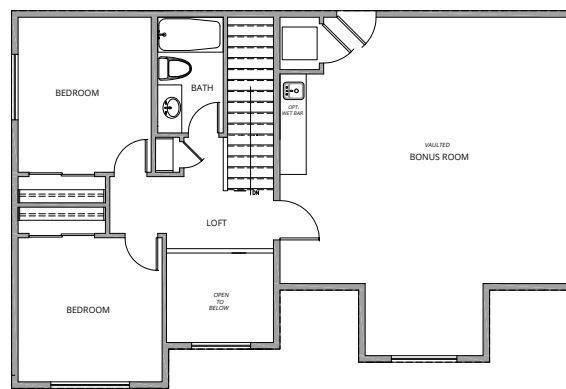
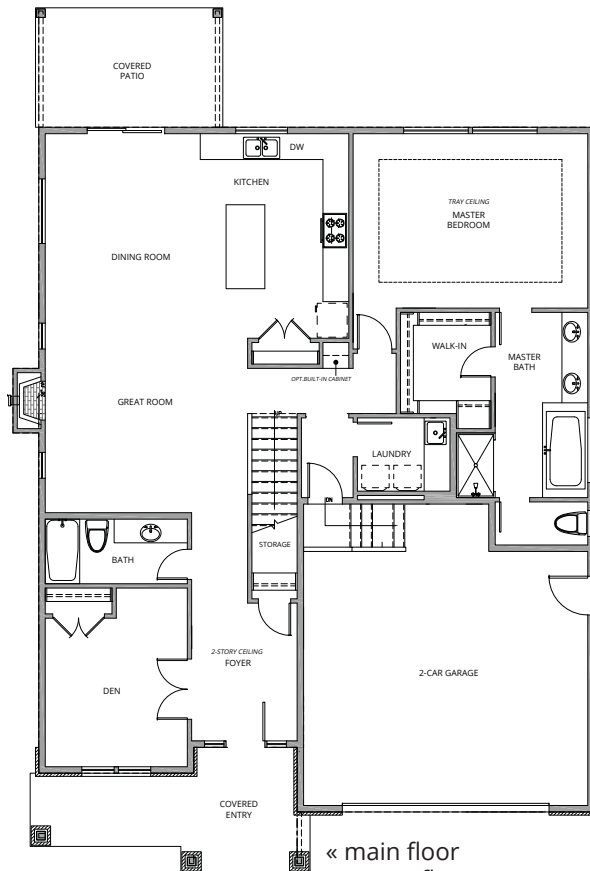
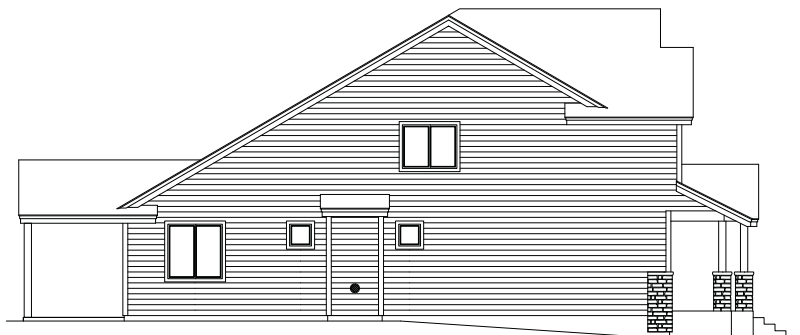




Vineyard Estates | Lot 1 Floor plan

3 Bed, 3 Bath, 2694 sf, 2-car garage, Den & bonus room
1090 NW 1st St. Dundee, OR 97115

Lot 1 - elevation / floor plan drawings



Stafford Homes and Land | Crafting Elegantly Efficient Homes

staffordhomesandland.com



Specifications, pricing, finish and designs subject to change without notice. Features, trim, details and elevations will vary from artist rendering and marketing plan. Materials subject to market fluctuations, supplier availability and product cycles; which may require substitution of equal to or better than items solely at the discretion of the builder. REV. 10/11/2017