



126 SW Brier Pl. \$545,900

3 Bed, 2.5 Bath, 2650 sf, 2-car garage, Bonus & Den/flex

This striking new craftsman home has a roomy floor plan with amenities plus storage galore. Slab granite counters in kitchen with full back splashes and island. Bonus room on lower level, covered entry, back patio slab. Carpet and laminate wood flooring throughout with fine trims. Tray ceiling in master, great room and foyer. Master has a large walk-in closet. Stainless steel finish appliances, gas fireplace, and a bonus room for office/flex space or another bedroom. Landscaped front yard w-irrigation system.

Features include: Bonus room, EPS energy efficiency scoring, Epoxy-coated garage floor, Sprinkler system, Glass shower enclosure, Soaker tub, Gas fireplace, Whole-house exhaust system, 95+% AFUE High efficiency gas furnace, Front yard landscaping.

3 Bed 2.5 Bath, 2650 sf, 2-car Gar. Lot 15 / Prop Type: Detached
 ML# 17141699 / Dundee Elem / Chehalem Valley Mid / Newberg HS / BI-MICO / DW / DISP / GAS-RNG / SSAPPL / FOR-95+ GAS / GAS-FPLC / LAM-FL / VINYL-FL / WW-CARP / COV-ENTR / RV-PRKG
 126 SW Brier Pl. Dundee, OR 97115 ML 17141699



For project updates, photos & more:

Scan this code

Visit NewHomeRealty.com for a selection of new home listings

Call 503.793.4336

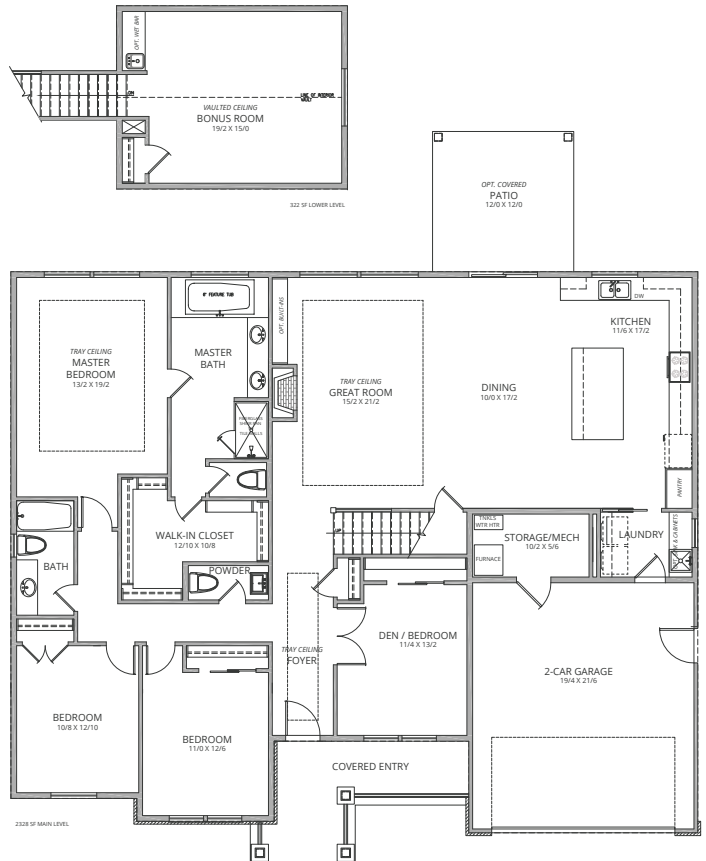
Airika @ NewHomeRealty.com

Exclusively marketed by New Home Realty
Airika Waible, Principal Broker
 Licensed in Oregon

www.newhomerealty.com



Lot 15 - elevation / floor plan drawings



Features include: Bonus room on lower level with vaulted ceiling, Fenced back yard, Den/Flex room that can be another bedroom, Large storage area in mechanical room, Generous stone facing, Tray ceilings in master, great room and foyer. Much more!

