



15782 SE Reese Ct

4 Bed, 2.5 Bath, 2664 sf, 3-car garage, Bonus room, Den

\$515,790

**This family-sized home is so roomy!** You will love the vaulted ceilings in the master and bonus rooms. Large walk-in closet, covered patio for entertaining, and 3-car garage for your things. Easy living floor plan with all bedrooms up-stairs. Slab granite counters in the kitchen with full back splashes and island. Carpet and laminate wood flooring with fine, upscale trims. Stainless steel finish appliances, gas fireplace, and den for office/flex space. Covered entry, fenced, landscaped front & back yards with irrigation system. Built to Earth Advantage Gold Certified construction standards for a lifetime of comfort.

**Features include:** Bonus room, Earth Advantage GOLD Certified, Verified EPS energy scoring, Epoxy-coated garage floor, Sprinkler system/timer, Glass shower enclosure, Soaker tub, Gas fireplace, Whole-house exhaust system, 95+% AFUE High efficiency gas furnace, Landscaping, Pre-plumbed for solar & central vacuum

4 Bed 2.5 Bath, 2664 sf, 3-car Gar. Lot 20 / Prop Type: Detached / ML# 17613071 / Riverside Elem / Alder Creek Mid / Rex Putnam HS / BI-MICO / DW / DISP / GAS-RNG / SSAPPL / FOR-95+ GAS / GAS-FPLC / LAM-FL / VINYL-FL / WW-CARP / COV-PATIO / BIV-RDY. 15782 SE Reese Ct. Milwaukie, OR 97267



*Premiere*  
**PROPERTY**  
*Group, LLC*

**Bill Hupfer | Blake Hupfer**  
Brokers licensed in Oregon

**Call 503-780-7653**

[www.PremierePropertyGroup.com](http://www.PremierePropertyGroup.com)  
[www.ConcordOaks.net](http://www.ConcordOaks.net)



Sample photos from one of our completed homes.



Actual finish will vary, shown for reference only.



**CERTIFIED TO**  
**EARTH ADVANTAGE GOLD STANDARDS**

Better Buildings Now

[earthadvantage.org](http://earthadvantage.org)

See more photos  
and available lots  
**SCAN THIS CODE >**





# CONCORD OAKS



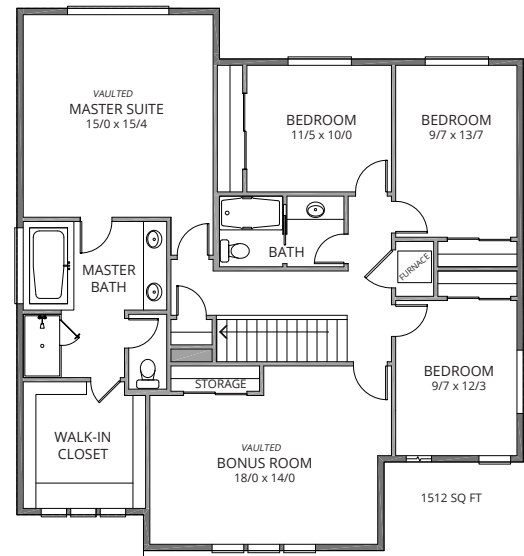
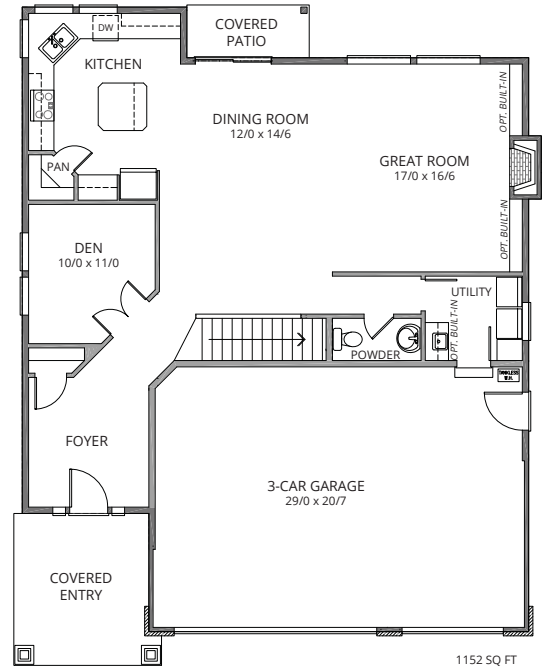
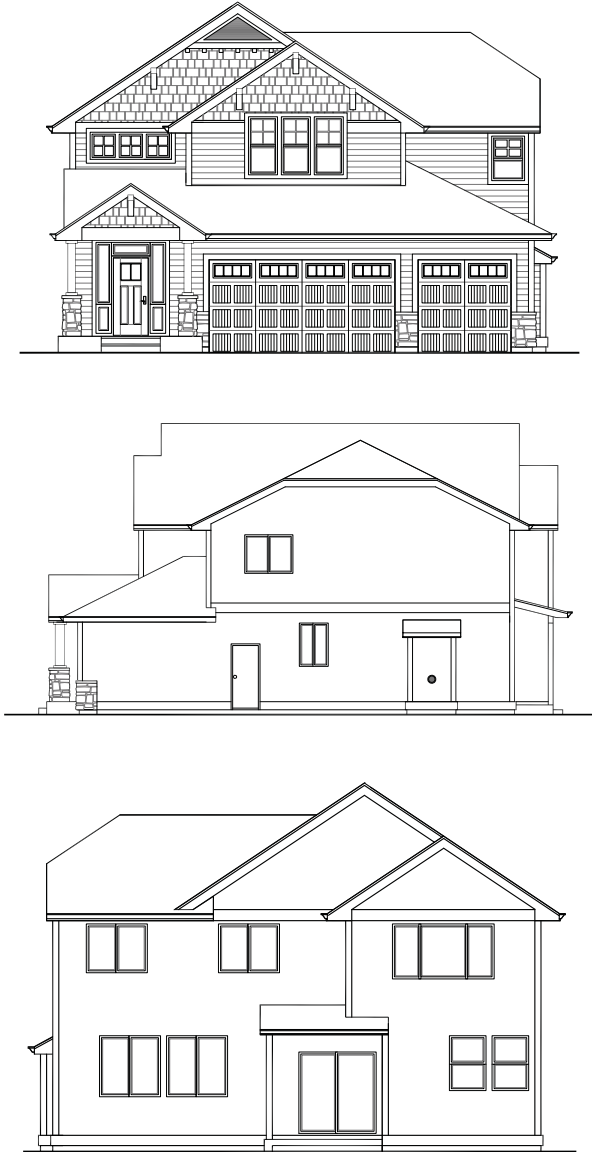
**CERTIFIED TO  
EARTH ADVANTAGE GOLD STANDARDS**

Better Buildings Now

earthadvantage.org

4 Bed, 2.5 Bath, 2664 sf, 3-car garage, Den

Lot 20 Elevations + Floor Plans



Stafford Homes and Land | Crafting Elegantly Efficient Homes

staffordhomesandland.com



Specifications, pricing, finish and designs subject to change without notice. Features, trim, details and elevations will vary from artist rendering and marketing plan. Materials subject to market fluctuations, supplier availability and product cycles; which may require substitution of equal to or better than items solely at the discretion of the builder. REV. 5/8/2017