



**STAFFORD**  
HOMES & LAND, LLC

The artist rendering is a preliminary illustration. Actual finish and trim WILL vary, shown for reference only.

**ORCHARD**  
**GLENNIS**

## 1614 S.E. Academy St \$369,900

3 Bed, 3 Bath, 2383 sf, 2-car garage, Den/Flex room

**This new master-on-main home will please.** You'll love the great floor plan with den/flex and bonus rooms, plus amenities and storage galore. Rich slab granite counters in kitchen with full back splashes and island. Covered front entry. Open patio in back. Carpet, vinyl and laminate wood flooring throughout with fine trim details. Tray ceilings in great room, foyer and master. Large walk-in closet, stainless steel finish appliances, cozy gas fire place. Front yard irrigation system with landscaping and more.

**Features include:** EPS energy efficiency score is 60. That is 28% better than code-built! Epoxy-coated garage floor, Glass shower enclosure in master, Gas fireplace, 95% High-efficiency furnace, Granite slab counter, Front landscaping, sprinkler system w-timer.

3 Bed 3 Bath, 2383 sf, 2-car Gar. Lot 14 / Prop Type: Detached / ML# 17083146 / Whitworth Elem / Lacreole Mid / Dallas HS / BI-MICO / DW / DISP / GAS-RNG / SSAPPL / 95+GAS-FOR-AIR / GAS-FPLC / LAM-FL / VINYL-FL / WW-CARP / COV-ENTRY  
1614 S.E. Academy St. Dallas, OR 97338 ML# 17083146



Sample photo from one of our completed homes. Actual finish will vary, shown for reference only.



For project updates, photos & more:

**Scan this code**

Visit [NewHomeRealty.com](http://NewHomeRealty.com) for a selection of new home listings

# Call 503.793.4336

Airika @ [NewHomeRealty.com](http://NewHomeRealty.com)



**NEW HOME REALTY**

Exclusively marketed by New Home Realty  
**Airika Waible**, Principal Broker  
Licensed in Oregon

[www.newhomerealty.com](http://www.newhomerealty.com) 





# ORCHARD GLEANN'S

## Orchard Gleanns | Lot 14 Floor plan

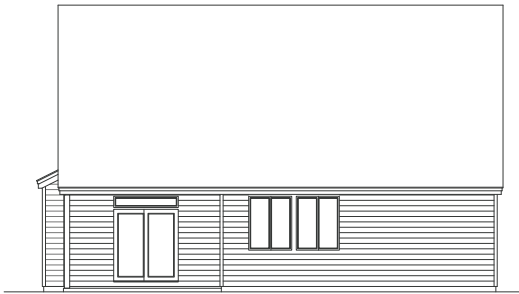
3 Bed, 3 Bath, 2383 sf, 2-car garage, Den, Bonus rooms  
1614 S.E. Academy Street Dallas, OR 97338

EPS™ IS AN ENERGY PERFORMANCE SCORE that measures and rates the net energy consumptions and carbon footprint of a newly constructed home. The lower the score, the better — a low EPS identifies a home as energy efficient with a smaller carbon footprint and lower energy costs.

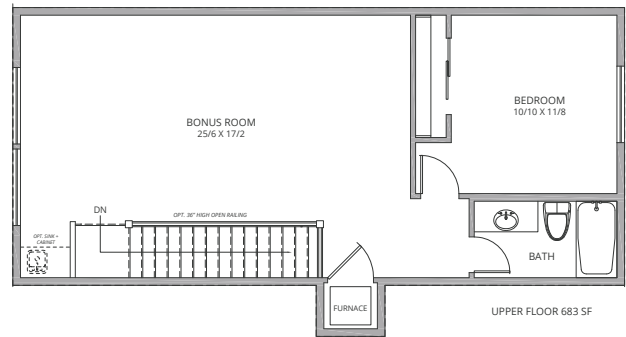
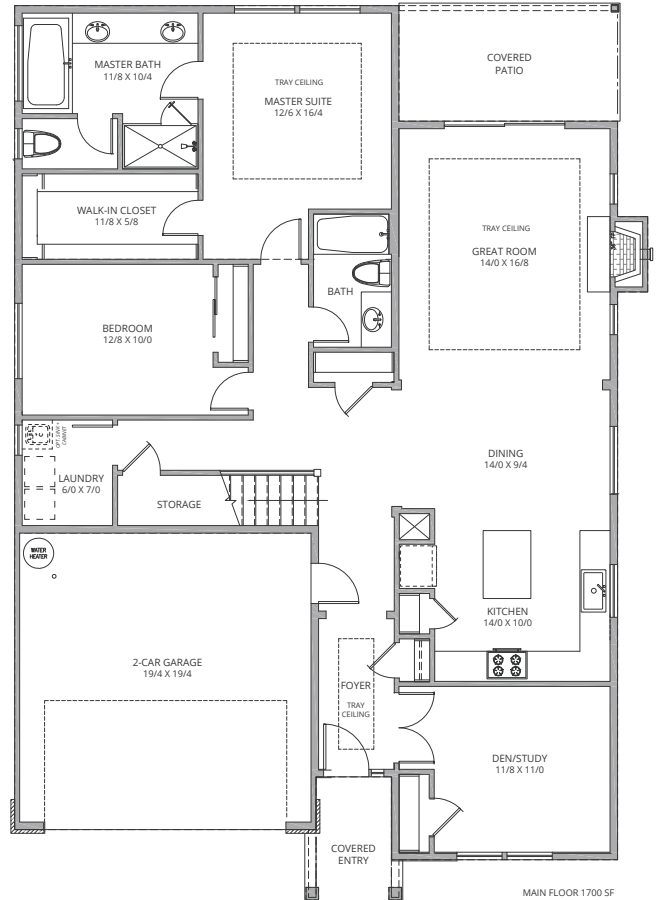
**THIS HOME:** Estimated average energy cost per month:  
Electric \$71, Natural Gas \$25 (Estimated Energy Cost calculated using \$0.11 per kWh and \$0.91 per therm)



LEFT ELEVATION



RIGHT ELEVATION



Stafford Homes and Land | Crafting Elegantly Efficient Homes

staffordhomesandland.com



Specifications, pricing, finish and designs subject to change without notice. Features, trim, details and elevations will vary from artist rendering and marketing plan. Materials subject to market fluctuations, supplier availability and product cycles; which may require substitution of equal to or better than items solely at the discretion of the builder. REV. 08/7/2017



Energy Performance Score

brought to you by Energy Trust of Oregon

EPS is a tool to assess a home's energy cost and carbon footprint.

EPS™ is an energy performance score that measures and rates the net energy consumptions and carbon footprint of a newly constructed home. The lower the score, the better — a low EPS identifies a home as energy efficient with a smaller carbon footprint and lower energy costs.

Estimated Monthly Energy Costs

\$96\*

Estimated average annual energy costs:

\$1,148\*

Estimated average energy cost per month: Electric \$71, Natural Gas \$25

Estimated Energy Cost calculated using \$0.11 per kWh and \$0.91 per therm

Location

1614 SE Academy St
Dallas, OR 97338

YEAR BUILT: 2017

SQ. FOOTAGE: 2,383

EPS ISSUE DATE: None

RATED BY: Moffet Energy Modeling

CCB #: None

Utilities:

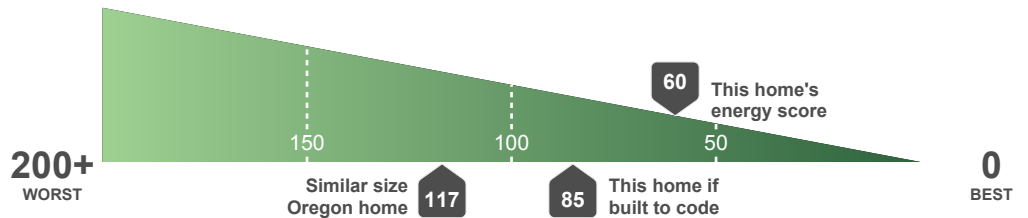
Gas: NW Natural Gas

Electric: Portland General Electric

ENERGY SCALE: Based on home energy use of natural gas, electricity, or energy generated from an installed renewable system.

Energy Score

60



Estimated total annual gross energy usage: Electric (kWh): 7,682, Natural Gas (therms): 325

Estimated average annual energy generation: No system

Estimated average net energy usage: Electric (kWh): 7,682\*, Natural Gas (therms): 325

CARBON FOOTPRINT:

Measured in tons of carbon dioxide per year (tons/yr). One ton ≈ 2,000 miles driven by one car (typical 21 mpg car).



Estimated average carbon footprint: Electric (tons/yr): 4.1, Natural gas (tons/yr): 1.9

\*Actual energy costs may vary and are affected by many factors such as occupant behavior, weather, utility rates and potential for renewable energy generation.

PRELIMINARY





EnergyPerformanceScore

brought to you by Energy Trust of Oregon

EPS is a tool to assess a home's energy cost and carbon footprint.

## + Energy-efficient features that contribute to this home's score:

Insulated Ceiling: R-49

Efficient Windows: U-0.3

Space Heating: 95.0 % AFUE Furnace

Insulated Walls: R-23

Efficient Lighting:

Envelope Tightness: 115.0 ACH @ 50Pa

Insulated Floors: R-30

Water Heater: Heat Pump 3.5 EF

### What was considered in developing this score?

A home's EPS is based on the energy-efficient features listed above as well as the home's size and specific design. Improvements and updates made to the home after the issue date will impact its EPS. EPS does not factor in occupant behavior, and as a result, actual energy costs may vary.

#### USEFUL TERMINOLOGY

##### Energy-efficient features

**R-Value:** Rates the efficiency of insulation; a higher R-Value signals improved performance of floor, ceiling and wall insulation.

**U-Value:** Indicates the rate of heat loss in windows; a lower U-Value demonstrates the effectiveness of a window, resulting in a more comfortable home.

**ACH @ 50Pa:** Total air changes per hour at 50 pascals; a low number signifies a properly-sealed home with fewer air leaks.

**EF:** Energy Factor for water heaters or appliances; the higher the EF, the more energy efficient the model.

##### Energy Score

A home's EPS is shown on an energy scale that ranges from zero to 200+ and is based on home energy use of natural gas, electricity, or energy generated from an installed renewable system.

##### Carbon footprint:

A home's energy consumption affects carbon emissions and impacts the environment. The carbon calculation for EPS is based on emissions from the utility-specific electricity generation method and natural gas consumption of the home at the time of this report.

##### Similar size Oregon home

**Energy:** The energy consumption of an average Oregon home of similar square footage, heating type and geographical region.

**Carbon:** The carbon footprint of an average Oregon home of similar square footage, heating type, geographical region and utility mix.

**This home if built to code:** The estimated annual energy and carbon use for this home if it was just built to the minimum standards allowed under Oregon code at the time of construction without energy-efficient features installed.

### Brought to you by Energy Trust of Oregon

Energy Trust developed EPS to educate about energy efficiency and provide a tool to help inform home-buying decisions.

For more information about EPS, contact Energy Trust at 1.866.368.7878 or visit [www.energytrust.org/eps](http://www.energytrust.org/eps).



Energy Trust of Oregon

421 SW Oak St, Suite 300, Portland, Oregon 97204

1.866.368.7878

503.546.6862 fax

[energytrust.org](http://energytrust.org)