

BONUS ROOM & DEN!



STAFFORD
HOMES & LAND LLC

The artist rendering is a preliminary illustration. Actual finish and trim WILL vary, shown for reference only

CASCADIA RIDGE

1700 NE Currin Cr Dr. \$379,900

3 Bed, 2.5 Bath, 2014 sf, Deep 3-car garage, Bonus room

This open, spacious new 2-story craftsman home has a roomy floor plan w-amenities and storage galore. Slab granite counters in kitchen with full back splashes and island. Covered front entry. Open patio in back. Carpet and laminate wood flooring throughout w-fine trims. Dramatic 2-story opening at foyer. Tray ceilings in master & bonus rooms. Large walk-in closet. Stainless steel finish appliances, great room with a stylish electric fireplace. Front yard irrigation system with landscaping. Energy Star home.

Features include: EPS energy efficiency scoring, Epoxy-coated garage floor, Glass shower enclosure in master, Electric fireplace, High-efficiency heat pump furnace, Heat pump water heater, Front yard landscaping with sprinkler system and timer.

3 Bed 2.5 Bath, 2014 sf, 3-car Gar. Lot 156 / Prop Type: Detached / ML# 17185693 / Clack. River Elem / Estacada Mid / Estacada HS / BI-MICO / DW / DISP / RNG / SSAPPL / FOR-AIR-HEAT-PUMP / ELEC-FPLC / LAM-FL / VINYL-FL / WW-CARP / COV-ENTRY 1700 NE Currin Cr Dr. Estacada, OR 97023 ML 17185693



Sample photo from one of our completed homes. Actual finish will vary. Shown for reference only.



For project updates, photos & more:

Scan this code

Visit NewHomeRealty.com for a selection of new home listings

Call 503.793.4336

Airika @ NewHomeRealty.com



NEW HOME REALTY

Exclusively marketed by New Home Realty
Airika Waible, Principal Broker
Licensed in Oregon

www.newhomerealty.com





CASCADIA RIDGE

Cascadia Ridge | Lot 156 Floor plan

3 Bed, 2.5 Bath, 2014, 3-car garage, Den, Bonus room
1700 NE Currin Creek Drive, Estacada, OR 97023

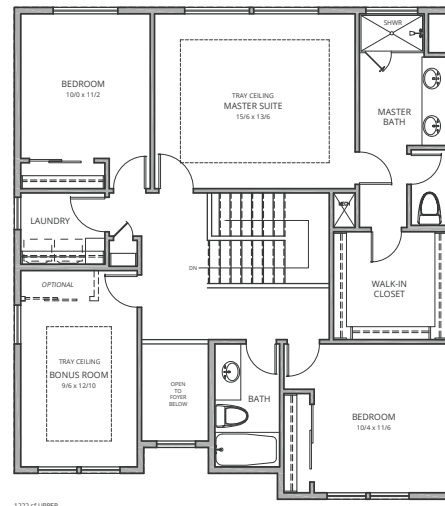
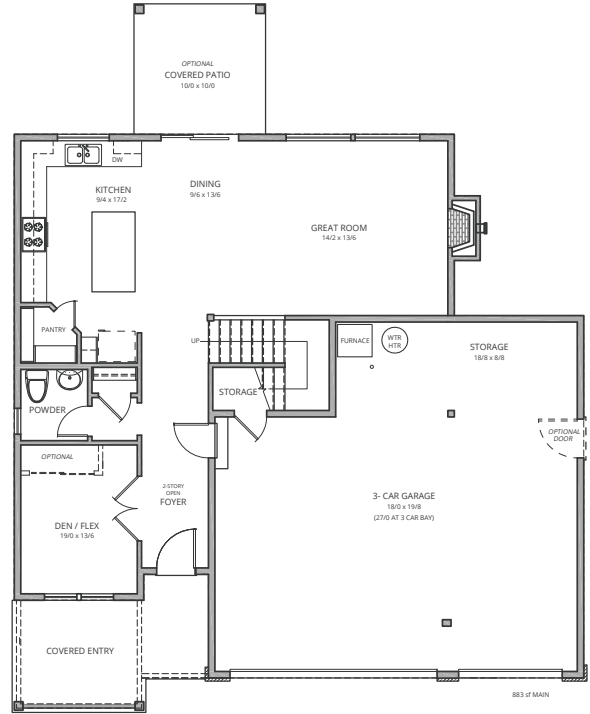
Lot 156 - elevation / floor plan drawings



RIGHT ELEVATION



REAR ELEVATION



1222 OF UPPER

Features include: EPS energy efficiency score, Sprinkler system, Glass shower enclosure, Electric fireplace, Heat pump furnace, more



Stafford Homes and Land | Crafting Elegantly Efficient Homes

staffordhomesandland.com



Specifications, pricing, finish and designs subject to change without notice. Features, trim, details and elevations will vary from artist rendering and marketing plan. Materials subject to market fluctuations, supplier availability and product cycles; which may require substitution of equal to or better than items solely at the discretion of the builder. REV. 05/05/2017



EnergyPerformanceScore

brought to you by EnergyTrust of Oregon

EPS is a tool to assess a home's energy cost and carbon footprint.

EPS™ is an energy performance score that measures and rates the net energy consumptions and carbon footprint of a newly constructed home. The lower the score, the better — a low EPS identifies a home as energy efficient with a smaller carbon footprint and lower energy costs.

Estimated Monthly Energy Costs

\$104*

Estimated average annual energy costs:

\$1,242*

Estimated average energy cost per month: Electric \$104, Natural Gas \$0

Estimated Energy Cost calculated using \$0.11 per kWh and \$0.0 per therm

Location

1700 NE Currin Cr
Estacada, OR 97023

YEAR BUILT: 2017

SQ. FOOTAGE: 2,014

EPS ISSUE DATE: None

RATED BY: Moffet Energy Modeling

CCB #: None

Utilities:

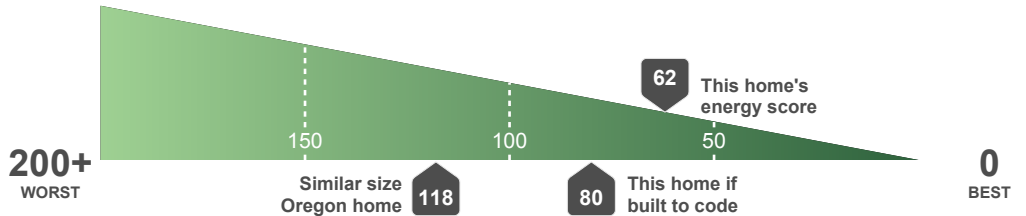
Gas:

Electric: Portland General Electric

Energy Score

62

ENERGY SCALE: Based on home energy use of natural gas, electricity, or energy generated from an installed renewable system.



Estimated total annual gross energy usage: Electric (kWh): 11,139, Natural Gas (therms): 0

Estimated average annual energy generation: No system

Estimated average net energy usage: Electric (kWh): 11,139*, Natural Gas (therms): 0

CARBON FOOTPRINT:

Measured in tons of carbon dioxide per year (tons/yr). One ton ≈ 2,000 miles driven by one car (typical 21 mpg car).



Estimated average carbon footprint: Electric (tons/yr): 5.8, Natural gas (tons/yr): 0.0

*Actual energy costs may vary and are affected by many factors such as occupant behavior, weather, utility rates and potential for renewable energy generation.

PRELIMINARY





EnergyPerformanceScore

brought to you by Energy Trust of Oregon

EPS is a tool to assess a home's energy cost and carbon footprint.

+ Energy-efficient features that contribute to this home's score:

Insulated Ceiling: R-49

Efficient Windows: U-0.3

Space Heating: 8.5 HSFP Heat Pump

Insulated Walls: R-23

Efficient Lighting: 100.0 %

Envelope Tightness: 3.0 ACH @ 50Pa

Insulated Floors: R-30

Water Heater: Heat Pump 3.5 EF

What was considered in developing this score?

A home's EPS is based on the energy-efficient features listed above as well as the home's size and specific design. Improvements and updates made to the home after the issue date will impact its EPS. EPS does not factor in occupant behavior, and as a result, actual energy costs may vary.

USEFUL TERMINOLOGY

Energy-efficient features

R-Value: Rates the efficiency of insulation; a higher R-Value signals improved performance of floor, ceiling and wall insulation.

U-Value: Indicates the rate of heat loss in windows; a lower U-Value demonstrates the effectiveness of a window, resulting in a more comfortable home.

ACH @ 50Pa: Total air changes per hour at 50 pascals; a low number signifies a properly-sealed home with fewer air leaks.

EF: Energy Factor for water heaters or appliances; the higher the EF, the more energy efficient the model.

Energy Score

A home's EPS is shown on an energy scale that ranges from zero to 200+ and is based on home energy use of natural gas, electricity, or energy generated from an installed renewable system.

Carbon footprint:

A home's energy consumption affects carbon emissions and impacts the environment. The carbon calculation for EPS is based on emissions from the utility-specific electricity generation method and natural gas consumption of the home at the time of this report.

Similar size Oregon home

Energy: The energy consumption of an average Oregon home of similar square footage, heating type and geographical region.

Carbon: The carbon footprint of an average Oregon home of similar square footage, heating type, geographical region and utility mix.

This home if built to code: The estimated annual energy and carbon use for this home if it was just built to the minimum standards allowed under Oregon code at the time of construction without energy-efficient features installed.

Brought to you by Energy Trust of Oregon

Energy Trust developed EPS to educate about energy efficiency and provide a tool to help inform home-buying decisions.

For more information about EPS, contact Energy Trust at 1.866.368.7878 or visit www.energytrust.org/eps.



Energy Trust of Oregon

421 SW Oak St, Suite 300, Portland, Oregon 97204

1.866.368.7878

503.546.6862 fax

energytrust.org