



3120 SE Riesling Rd

3 Bed, 3 Bath, 2383 sf, 2-car garage, Bonus room, Den

\$505,900

This new master-on-main home will please. You will love the tray ceilings in the great room, foyer and master suite. Large walk-in closet and a wide covered patio for entertaining. The floor plan offers easy living with plenty of room. Slab granite counters in the kitchen with full back splashes and island. Carpet and laminate wood flooring with fine, upscale trims. Stainless steel finish appliances, gas fireplace, covered entry and den for office/flex space. Fenced in back, landscaped and outfitted with a timer-controlled sprinkler system for easy care. Earth Advantage construction standards for a lifetime of comfort.

Features include: Earth Advantage GOLD Certified, Verified EPS energy scoring, Epoxy-coated garage floor, Sprinkler system/timer, Glass shower enclosure, Soaker tub, Gas fireplace, Whole-house exhaust system, 95+% AFUE High efficiency gas furnace, Landscaping, Pre-plumbed for solar & central vacuum

3 Bed 3 Bath, 2383 sf, 2-car Gar. Lot 4 / Prop Type: Detached / ML# 17000419 / Riverside Elem / Alder Creek Mid / Rex Putnam HS / BI-MICO / DW / DISP / GAS-RNG / SSAPPL / FOR-95+ GAS / GAS-FPLC / LAM-FL / VINYL-FL / WW-CARP / COV-PATIO / BIV-RDY. 3120 SE Riesling Rd. Oak Grove, OR 97267



Premiere
PROPERTY
Group, LLC

Bill Hupfer | Blake Hupfer
Brokers licensed in Oregon

Call 503-780-7653

www.PremierePropertyGroup.com
www.ConcordOaks.net 



Sample photos from one of our completed homes.



Actual finish will vary, shown for reference only.



CERTIFIED TO
EARTH ADVANTAGE GOLD STANDARDS

Better Buildings Now

earthadvantage.org

See more photos
and available lots
SCAN THIS CODE >





CONCORD OAKS



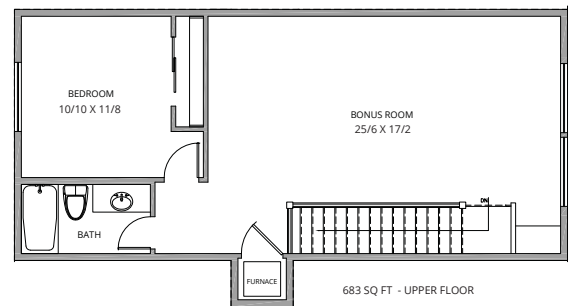
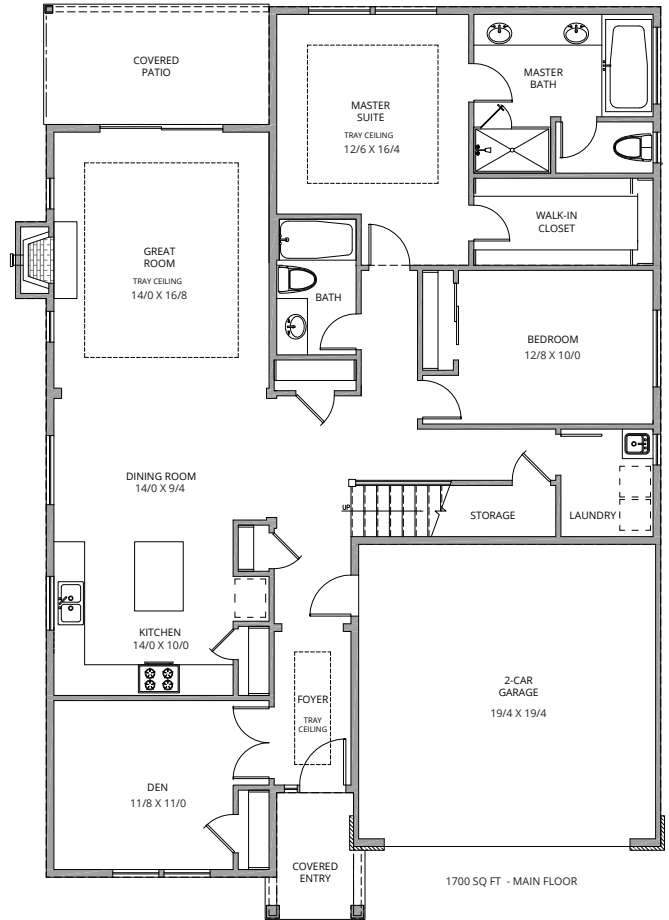
CERTIFIED TO
EARTH ADVANTAGE GOLD STANDARDS

Better Buildings Now

earthadvantage.org

3 Bed, 3 Bath, 2383 sf, 2-car garage, Bonus room, Den

Lot 4 Elevations + Floor Plans



Features include:

- Granite Slab kitchen counter tops w-full back splash
- Efficient on-demand tankless water heater
- Energy Trust of Oregon Energy Performance Score (EPS)
- Front & back yard landscaping with irrigation
- Fully fenced back yard with (1) gate



Stafford Homes and Land | Crafting Elegantly Efficient Homes

staffordhomesandland.com



Specifications, pricing, finish and designs subject to change without notice. Features, trim, details and elevations will vary from artist rendering and marketing plan. Materials subject to market fluctuations, supplier availability and product cycles; which may require substitution of equal to or better than items solely at the discretion of the builder. REV. 11/2/2017