



S STAFFORD
HOMES & LAND LLC

Rendering for reference only. Actual finish and elevation will vary

CONCORD OAKS

3225 SE Concord Road 3 Bed, 2.5 Bath, 2611 sf, 2-car garage, Loft & Den \$528,618

A touch of Cape Cod just for you. Master on the main with an upper loft. Covered porch in front, vaulted great room and dramatic skywell. Deep walk-in closet for your treasures. Slab granite counters in the kitchen with full back splashes and island. Carpet and laminate wood flooring with fine, upscale trims. Stainless steel finish appliances, gas fireplace, covered patio and a den that could be a bedroom or office. Fenced in back, landscaped and outfitted with a timer-controlled sprinkler system for easy care. Earth Advantage Gold Certified construction standards for a lifetime of comfort.

Features include: Earth Advantage GOLD Certified, Verified EPS energy scoring, Epoxy-coated garage floor, Sprinkler system/timer, Glass shower enclosure, Soaker tub, Gas fireplace, Whole-house exhaust system, 95+% AFUE High efficiency gas furnace, Landscaping, Pre-plumbed for solar & central vacuum

3 Bed 2.5 Bath, 2611 sf, 2-car Gar. Lot 32 / Prop Type: Detached / ML# 17187579 / Riverside Elem / Alder Creek Mid / Rex Putnam HS / BI-MICO / DW / DISP / GAS-RNG / SSAPPL / FOR-95+ GAS / GAS-FPLC / LAM-FL / VINYL-FL / WW-CARP / COV-PATIO / BIV-RDY. 3225 SE Concord Rd. Milwaukie, OR 97267



Premiere
PROPERTY
Group, LLC

Bill Hupfer | Blake Hupfer
Brokers licensed in Oregon

Call 503-780-7653

www.PremierePropertyGroup.com
www.ConcordOaks.net 



Sample photos from one of our completed homes.



Actual finish will vary, shown for reference only.



CERTIFIED TO
EARTH ADVANTAGE GOLD STANDARDS

Better Buildings Now

earthadvantage.org

See more photos
and available lots
SCAN THIS CODE >





CONCORD OAKS



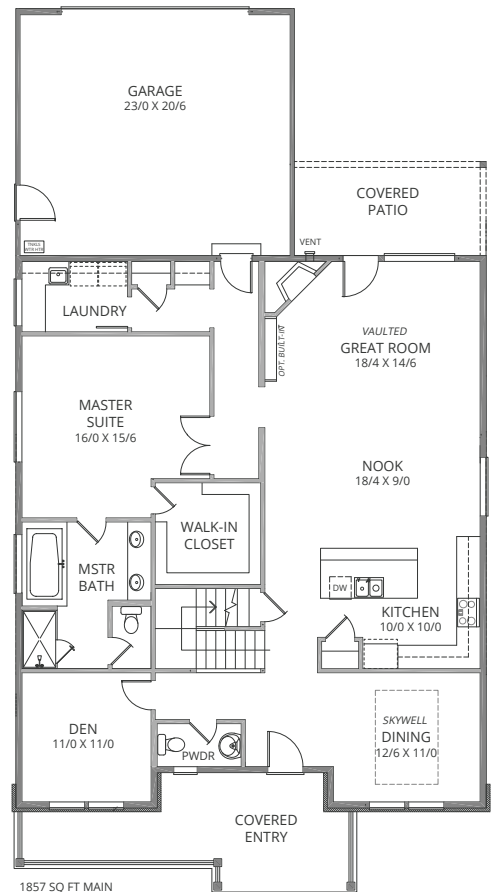
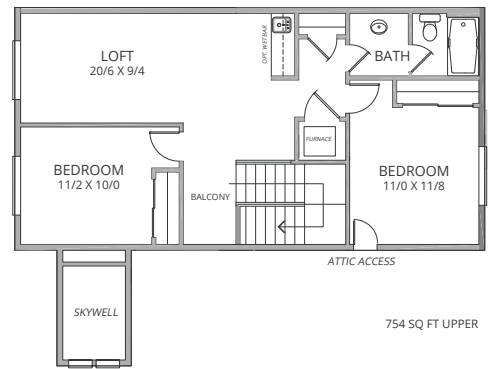
**CERTIFIED TO
EARTH ADVANTAGE GOLD STANDARDS**

Better Buildings Now

earthadvantage.org

3 Bed, 2.5 Bath, 2611 sf, 2-car garage, Loft, Den

Lot 32 Elevations + Floor Plans



Stafford Homes and Land | Crafting Elegantly Efficient Homes

staffordhomesandland.com



Specifications, pricing, finish and designs subject to change without notice. Features, trim, details and elevations will vary from artist rendering and marketing plan. Materials subject to market fluctuations, supplier availability and product cycles; which may require substitution of equal or better than items solely at the discretion of the builder. REV. 10/25/2017



Energy Performance Score

brought to you by Energy Trust of Oregon

EPS is a tool to assess a home's energy cost and carbon footprint.

EPS™ is an energy performance score that measures and rates the net energy consumptions and carbon footprint of a newly constructed home. The lower the score, the better — a low EPS identifies a home as energy efficient with a smaller carbon footprint and lower energy costs.

Estimated Monthly Energy Costs

\$93*

Estimated average annual energy costs:

\$1,113*

Estimated average energy cost per month: Electric \$62, Natural Gas \$30

Estimated Energy Cost calculated using \$0.11 per kWh and \$0.91 per therm

Location

3225 SE Concord Rd
Milwaukie, OR 97267

YEAR BUILT: 2017

SQ. FOOTAGE: 2,611

EPS ISSUE DATE: None

RATED BY: Earth Advantage

CCB #: 204173

Utilities:

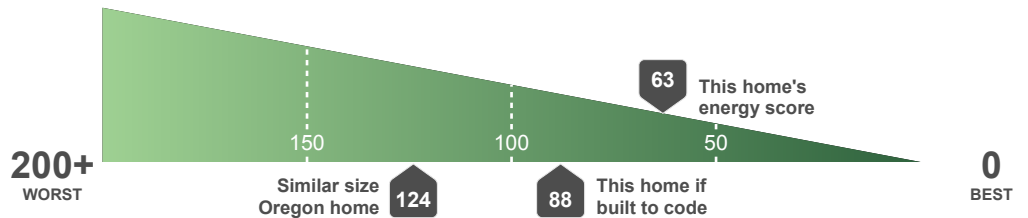
Gas: NW Natural Gas

Electric: Portland General Electric

Energy Score

63

ENERGY SCALE: Based on home energy use of natural gas, electricity, or energy generated from an installed renewable system.



Estimated total annual gross energy usage: Electric (kWh): 6,748, Natural Gas (therms): 401

Estimated average annual energy generation: No system

Estimated average net energy usage: Electric (kWh): 6,748*, Natural Gas (therms): 401

CARBON FOOTPRINT:

Measured in tons of carbon dioxide per year (tons/yr). One ton ≈ 2,000 miles driven by one car (typical 21 mpg car).



Estimated average carbon footprint: Electric (tons/yr): 3.6, Natural gas (tons/yr): 2.3

*Actual energy costs may vary and are affected by many factors such as occupant behavior, weather, utility rates and potential for renewable energy generation. A home's EPS takes into account the energy-efficient features installed in the home on the date the EPS was issued, but does not account for occupant behavior.

PRELIMINARY





EnergyPerformanceScore

brought to you by Energy Trust of Oregon

EPS is a tool to assess a home's energy cost and carbon footprint.

+ Energy-efficient features that contribute to this home's score:

Insulated Ceiling: R-49

Efficient Windows: U-0.3

Space Heating: 96.0 % AFUE Furnace

Insulated Walls: R-23

Efficient Lighting: 100.0 %

Envelope Tightness: 4.0 ACH @ 50Pa

Insulated Floors: R-38

Water Heater: Tankless 0.99 EF

What was considered in developing this score?

A home's EPS is based on the energy-efficient features listed above as well as the home's size and specific design. Improvements and updates made to the home after the issue date will impact its EPS. EPS does not factor in occupant behavior, and as a result, actual energy costs may vary.

USEFUL TERMINOLOGY

Energy-efficient features

R-Value: Rates the efficiency of insulation; a higher R-Value signals improved performance of floor, ceiling and wall insulation.

U-Value: Indicates the rate of heat loss in windows; a lower U-Value demonstrates the effectiveness of a window, resulting in a more comfortable home.

ACH @ 50Pa: Total air changes per hour at 50 pascals; a low number signifies a properly-sealed home with fewer air leaks.

EF: Energy Factor for water heaters or appliances; the higher the EF, the more energy efficient the model.

Energy Score

A home's EPS is shown on an energy scale that ranges from zero to 200+ and is based on home energy use of natural gas, electricity, or energy generated from an installed renewable system.

Carbon footprint:

A home's energy consumption affects carbon emissions and impacts the environment. The carbon calculation for EPS is based on emissions from the utility-specific electricity generation method and natural gas consumption of the home at the time of this report.

Similar size Oregon home

Energy: The energy consumption of an average Oregon home of similar square footage, heating type and geographical region.

Carbon: The carbon footprint of an average Oregon home of similar square footage, heating type, geographical region and utility mix.

This home if built to code: The estimated annual energy and carbon use for this home if it was just built to the minimum standards allowed under Oregon code at the time of construction without energy-efficient features installed.

Brought to you by Energy Trust of Oregon

Energy Trust developed EPS to educate about energy efficiency and provide a tool to help inform home-buying decisions.

For more information about EPS, contact Energy Trust at 1.866.368.7878 or visit www.energytrust.org/eps.



Energy Trust of Oregon

421 SW Oak St, Suite 300, Portland, Oregon 97204

1.866.368.7878

503.546.6862 fax

energytrust.org