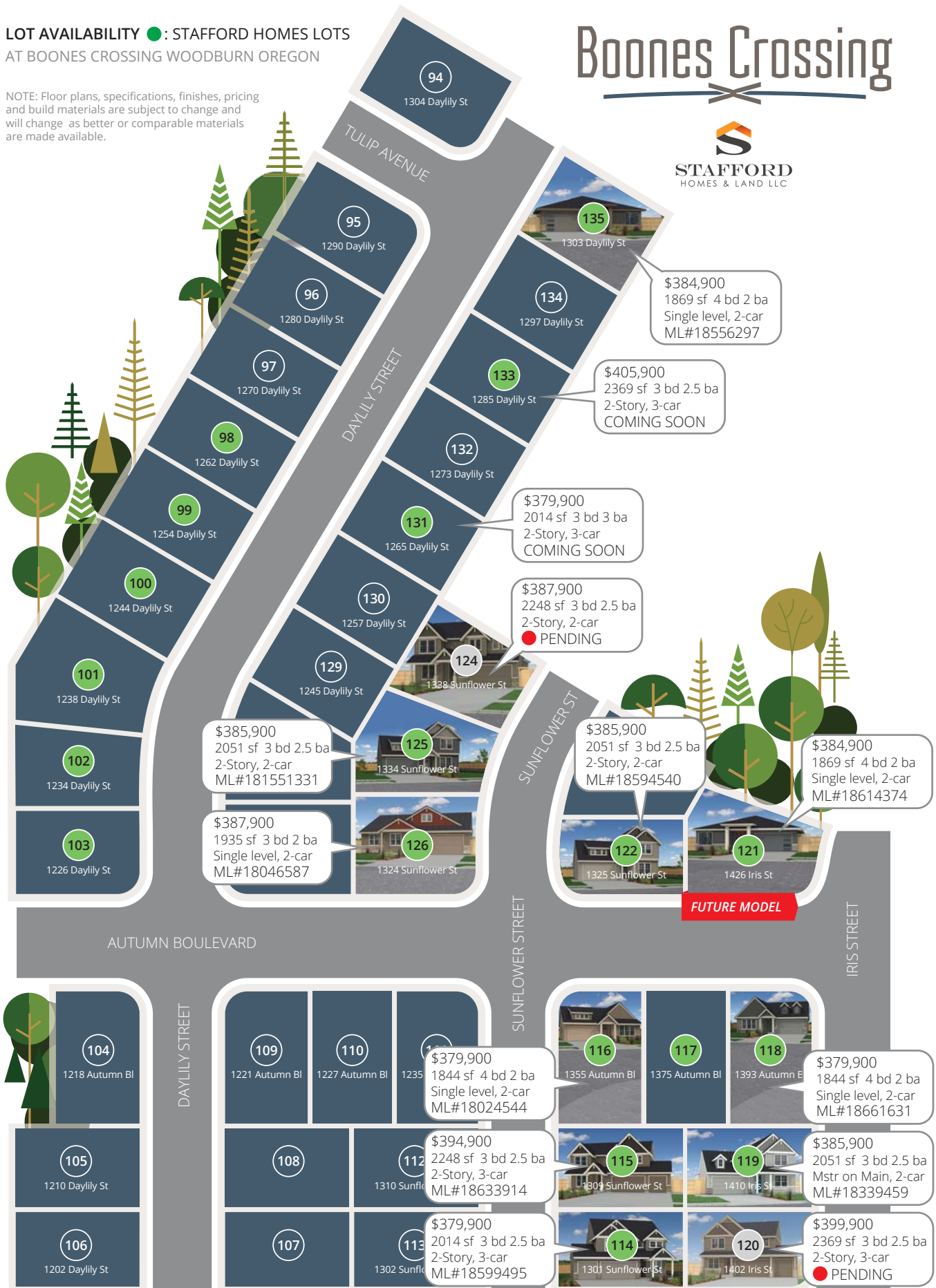


LOT AVAILABILITY ● : STAFFORD HOMES LOTS
AT BOONES CROSSING WOODBURN OREGON

NOTE: Floor plans, specifications, finishes, pricing and build materials are subject to change and will change as better or comparable materials are made available.

Boones Crossing



Boones Crossing

Boones Crossing | Standard Features

Elegant efficiency just for you.

Energy Efficiency and Security:

- **Energy Trust** of Oregon certified home. **EPS Energy Performance Score** verified by 3rd party.
- **Solar-Ready** electrical panel
- Moisture content **certified** with certificate from 3rd party testing company
- 2x6 Exterior **double wall** construction
- Air sealing to reduce building air leakage resulting in 2.5-4.0 air changes/hour (ACH)
- **R-49** ceiling insulation
- **R-23** blown in blanket (BIBS) exterior wall
- **R-30** floor insulation
- Ultra efficient 65 gal **heat pump water heater**
- Low flush toilets and water efficient fixtures
- Non-Metallic **PEX** plumbing throughout
- **Energy Star** rated dishwasher
- High-efficiency **96% gas furnace**, A/C-ready
- Programmable thermostat
- **Energy Star** rated windows with a U rating of .3 for 15% savings in heat and cooling loss.
- We install energy-efficient **LED & CFL** lamps in the fixtures that can accommodate them, for substantial savings and long operational life spans

Exterior Home Features:

- Craftsman style plans ranging from 1700-2383 sf
- Three color paint combination to enhance the home elevation and showcase materials
- 2 Hose bibs, one front, one back
- Pre-primed **HardiePlank® Lap Siding** and **Hardie Trim® Boards** with 25 year warranty
- **Cultured stone** accents on many plans
- Durable fiberglass exterior doors
- Front and rear electrical outlets
- Low maintenance front landscaping w-timer controlled **sprinklers/irrigation**
- Exposed aggregate on patios and driveway
- Insulated garage door with (1) opener, (2) remotes included
- Fully-fenced back yard w-gate

Interior Home Features:

- 9' ceilings on main floor
- Flooring is pre-finished laminate hardwood, carpet and vinyl.
- Oversized master bedroom with tray ceiling on most plans.
- Walk in closet in master bedroom
- Gas fireplace w-custom mantle and tile surround
- Stylish tile counter tops with designer accents in bathrooms. **Granite slab** in kitchen.
- **Brushed nickel** door and cabinet hardware
- Brushed nickel plumbing and light fixtures
- Mirrors and bath hardware in all baths
- Glass shower enclosure in master bath
- **Craftsman-style** moldings and trim throughout
- 2 panel raised panel smooth doors and closets
- Quality **two-tone** interior paint
- Pre-plumbed for whole house vacuum system
- Textured & painted garage w-**Coating** on floor

Elegant Kitchens:

- **Granite Slab** counter tops with designer deco and **full back splash**
- Extensive cabinetry with shaker style doors
- Stainless finish gas range and OTR microwave
- Stainless finish **Energy Star®** dishwasher
- Stainless steel undermount single-bowl sink
- Chrome kitchen faucet w-**pull out sprayer**
- Many plans with walk-in pantry

Exclusively marketed by New Home Realty



Airika Waible,
Licensed Oregon Broker
Call 503-793-4336
newhomerealty.com



Specifications, pricing, finish and designs subject to change without notice. Features, trim, details and elevations will vary from artist rendering and marketing plan. Materials subject to market fluctuations, supplier availability and product cycles; which may require substitution of equal to or better than items solely at the discretion of the builder. REV. 7/28/2018